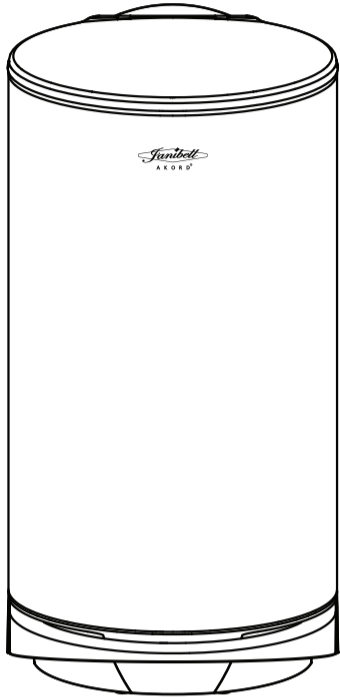




⚠ WARNING! Suffocation Hazard. Keep refills away from infants and children.



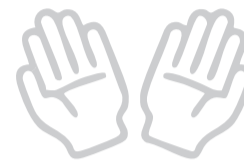
Ergonomic

Remove waste easily without squatting down



Defense

Quintuple Odor Block effectively shields against unpleasant odors and insects



Hygiene

Keep your hands clean with a simple step



Savings

Save Time and Money

Durable Design. Sustainable Future. Simple. Lasting. Eco-Friendly.



Metal Body: Built to Last, Designed to Blend In

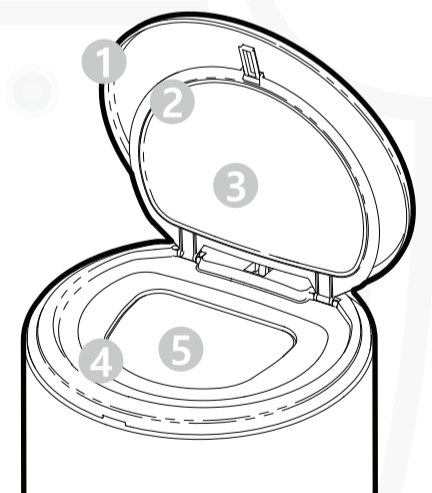


11 US Gallons: Space-Maximizing Efficiency



Cylindrical Design: Timeless Form, Lifetime Function

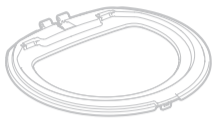
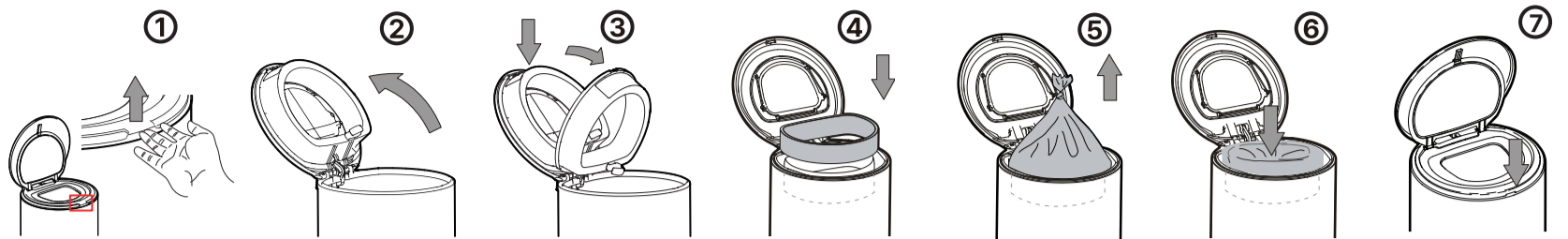
Quintuple Odor Block



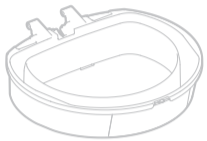
Odors are thoroughly blocked by a five-layer system: an outer lid, two inner lids, and two silicone seals.

Refill Liner Replacement Manual

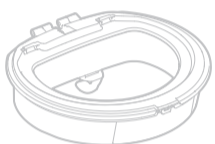
⚠ **WARNING! Suffocation Hazard. Keep refills away from infants and children.**



Top Cover



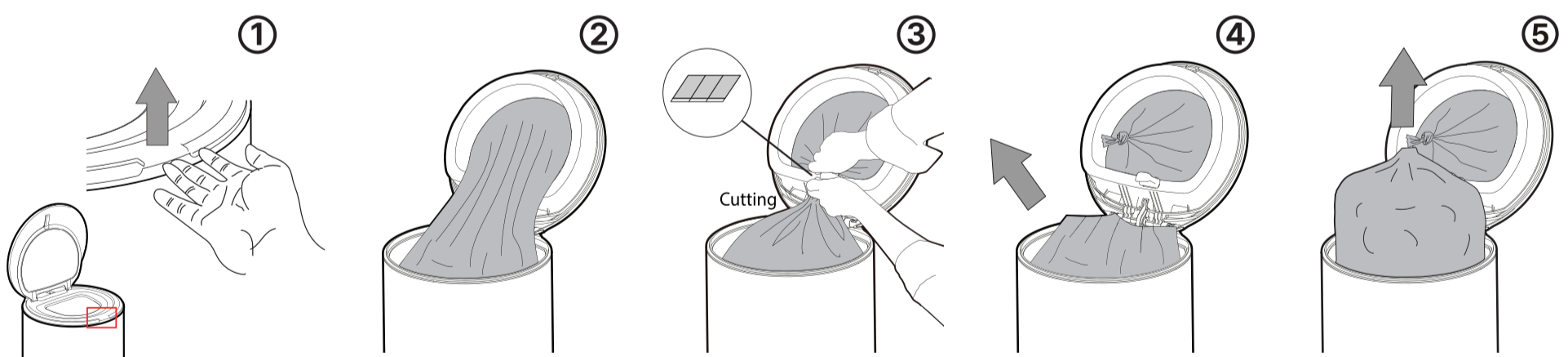
Refill Cartridge



Head Module

1. **Open the lid & unlock head module** Press the pedal fully to open the lid and place your fingers between the bin body and the head module, then pull upward to unlock the module.
2. **Tilt head module back** Fully tilt the unlocked head module backward to clear the workspace for the refill.
3. **Separate empty cartridge** Press the front part of the head module to detach the empty refill cartridge along with its top cover, then lower the cartridge so it rests horizontally on the bin frame.
4. **Insert new refill** Remove the paper band from the new refill, then place the refill into the empty cartridge frame.
5. **Secure liner** Pull the outer layer of the liner upward and over the edge of the frame, then tie a firm knot. ⚠ **Caution:** Do NOT pull the inner layer.
6. **Push liner down** Push the liner to the **bottom of the bin** so that it creates enough space for the garbage and proper operation.
7. **Lock head module** Close the top cover and press down firmly until you hear a "Click," ensuring the head module is fully locked onto the bin body.

How to Discharge/Tie Off the Full Refill Liner



1. **Open & Lift Frame** : When the bin is full, open the lid all the way and pull up the inner frame.
2. **Cut the Bag** : Use the safety blade located inside the frame to cut the top of the full garbage bag.
3. **Tie & Remove** : Tie the top end of the full bag/liner and lift it out for disposal.
4. **Squat-Down Free** : A full trash bag can be easily discharged by pulling it up.